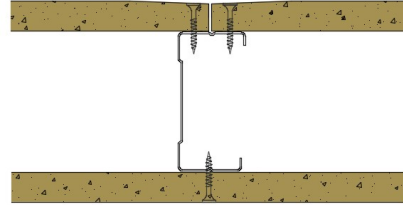


## PSHD70-B-63 - SPEEDLINE System Data Sheet - Version V1 (24-10-23)

SPEEDLINE 70mm Heavy Duty 'C' Stud Partition  
@600mm Ctrs, with BG Gyproc 15mm DuraLine  
each side



### System Performance Breakdown

Fire Resistance:

BS476 Part 22:1987:

Test Ref & Date or Applied Ref & Report:

Max Height:

Thickness:

Duty Grade: BS 5234: Part 2:1992:

Sound Insulation:

**60/60 Minutes** (Integrity/Insulation).

**BTC 17435F - BRE Report P102396-1011A**

**Refer to Speedline Specification Clause**

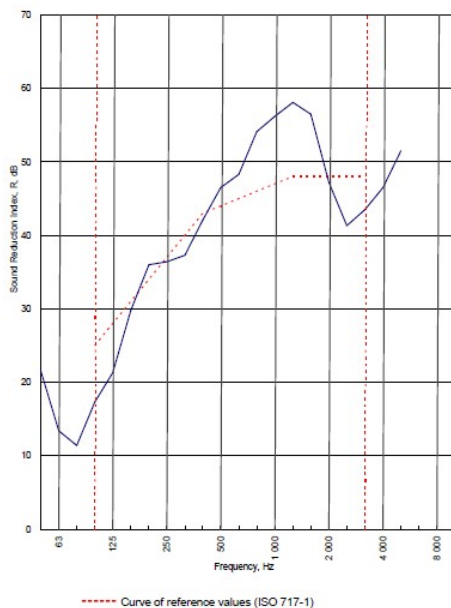
**102 mm.** (At Base Track, Excluding Finishes)

**Severe - Annexes A-F**

**44 R<sub>w</sub>dB**, Date Tested or Assessed Against - 29/06/2010

Test Code:	H16909DA
Test Date:	29/06/2010

Freq. Hz	R dB
50	21.6
63	13.4
80	11.4
100	17.3
125	21.3
160	29.8
200	36.0
250	36.4
315	37.3
400	42.1
500	46.5
630	48.3
800	54.1
1 000	56.2
1 250	58.1
1 600	56.5
2 000	47.2
2 500	41.3
3 150	43.5
4 000	46.5
5 000	51.5
6 300	
8 000	
10 000	



Rating according to BS EN ISO 717-1:1997		
<b>R<sub>w</sub> (C;Ctr) = 44 (-3;-9) dB</b>		
Max dev. 7.7 dB at 100 Hz		
Evaluation based on laboratory measurement results obtained by an engineering method:	C <sub>50-2500</sub> = -5 dB	C <sub>50-5000</sub> = -4 dB
	C <sub>100-5000</sub> = -2 dB	
	C <sub>10,50-3150</sub> = -15 dB	C <sub>10,50-5000</sub> = -15 dB
		C <sub>10,100-5000</sub> = -9 dB

TESTED AT ONE OF THE UKAS ACCREDITED LABORATORIES BELOW

B.T.C (H-Ref on Graph)

B.R.E

AIRO

S.R.L

Customer: Metsec plc Hepsec Division

BTC 16959A: Page 8 of 10



SPEEDLINE Drywall Systems, Adsetts House, 16 Europa View, Sheffield Business Park, Sheffield, S9 1XH.

Tel: 0114 231 8030.

Email: [enquiries@speedlinedrywall.co.uk](mailto:enquiries@speedlinedrywall.co.uk)

(As per the requirements set out in ISO/IEC 17025:2017 regarding test data the results stated have been carried out by voestalpine Metsec plc as part of the contract to supply Speedline Metal Sections to SIG Plc)